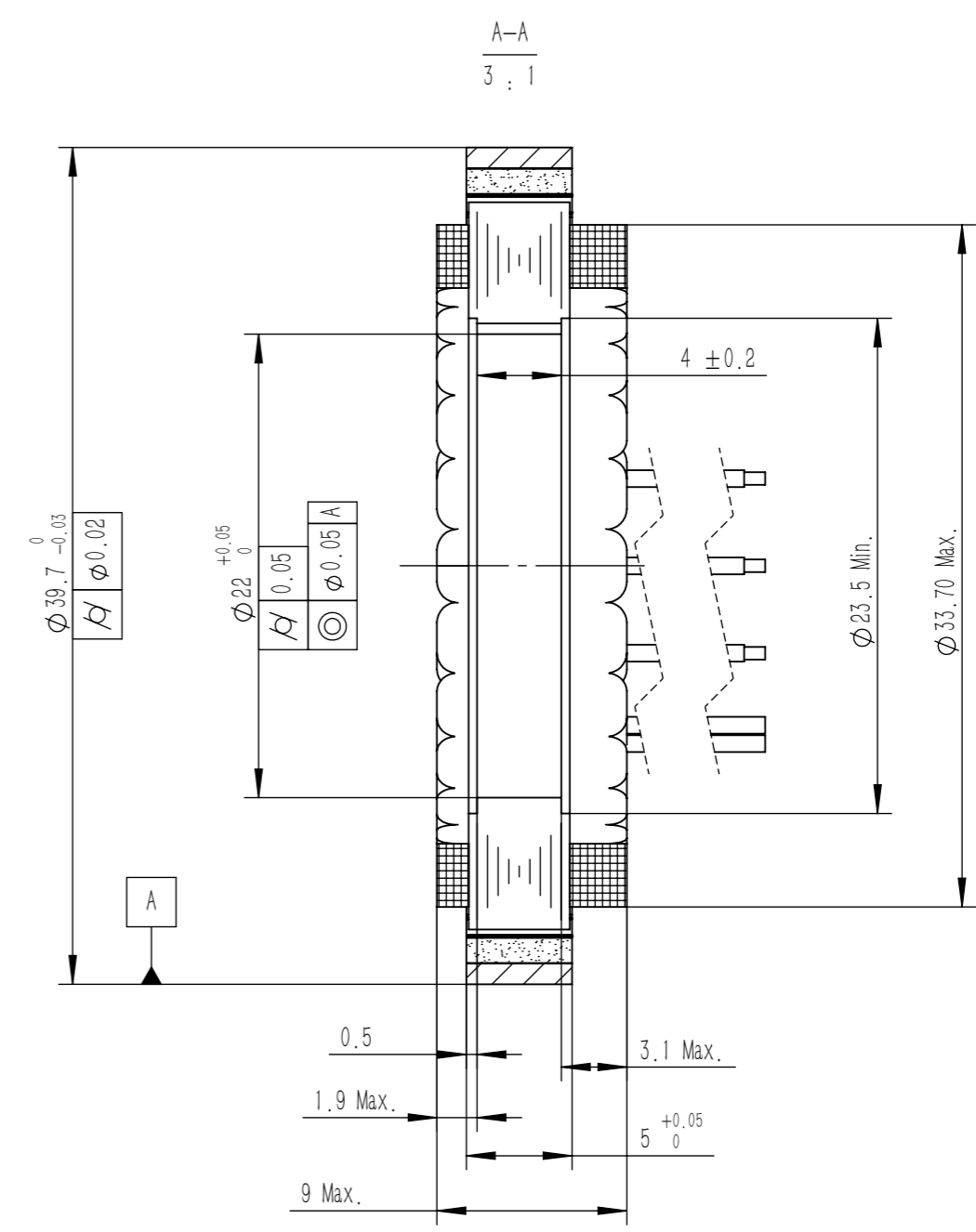
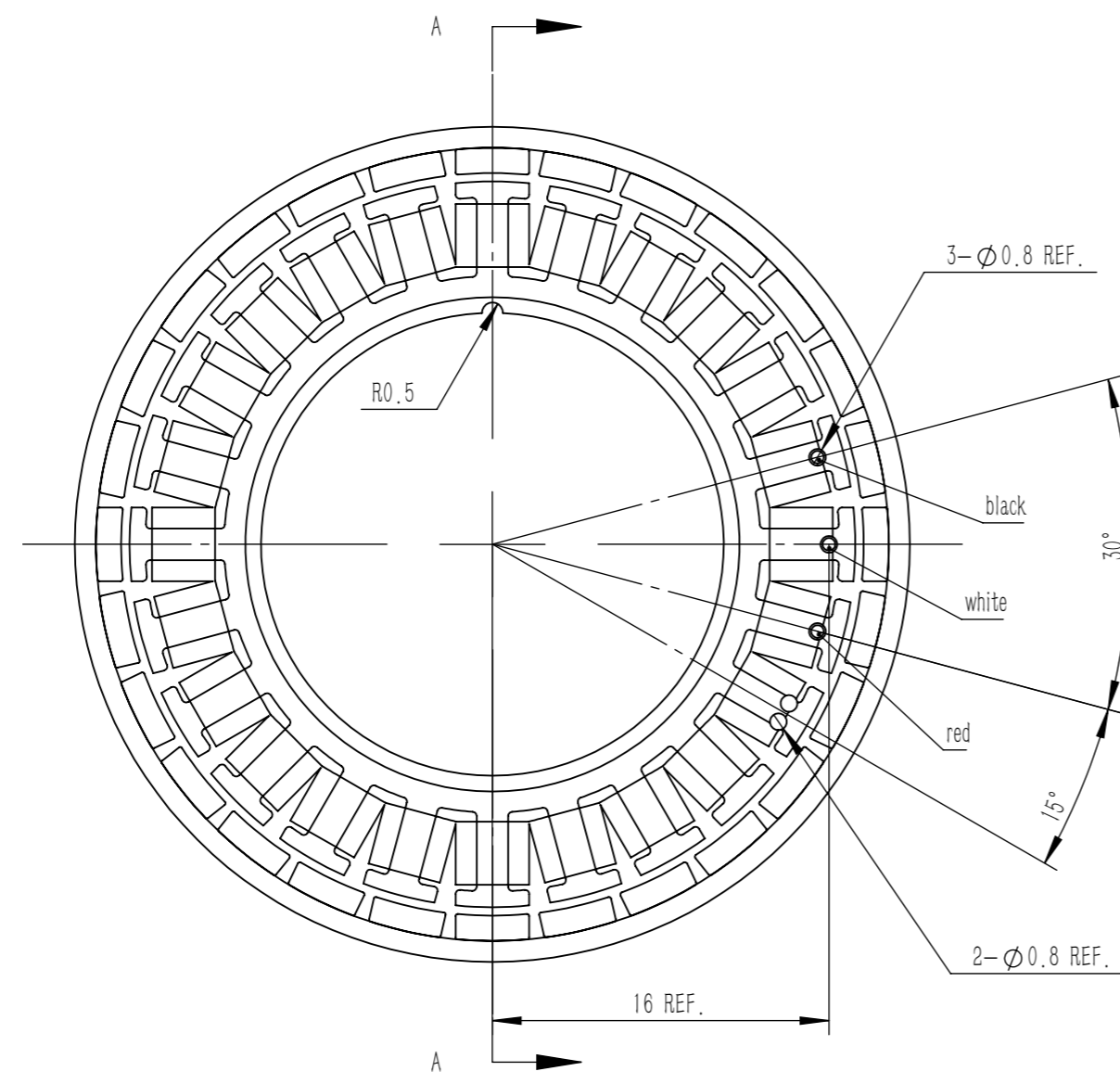


标记	处数	更改内容	版本	签名	时间



零件代号

借(通)用件登记

描图

描校

旧底图总号

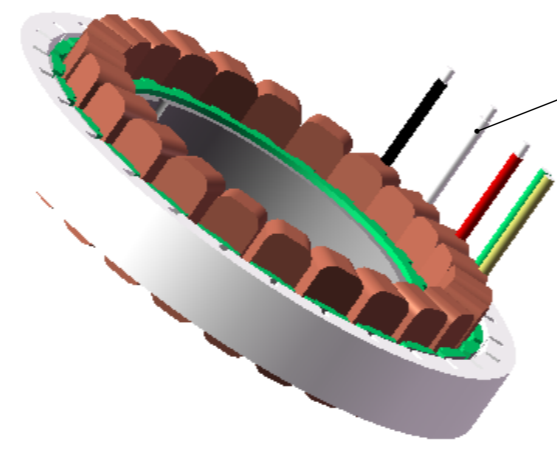
底图总号

签字

日期

Motor Parameter

Model	UE4009
Voltage (V)	24V DC
Rated output (W)	24.33
Rated torque (Nm)	0.054
Instant max torque (Nm)	0.13
Rated current (Arms)	1.2
Instant max current (Arms)	3
Rated speed (Rpm)	4300
Max speed (Rpm)	6000
Torque constant (Nm/Arms)	0.05
Rotor inertia (kg.cm ²)	0.02
Back EMF coefficient (V/Krpm)	4
Resistance (Ω)	4.2
Inductance (mH)	0.25
Number of pole-pairs (P)	14



Wire: #26AWG black,white,red,corresponding to V, W, W
 Wire length 250mm
 Temperature control wire: #26AWG, yellow and green wires, length: 250mm
 Temperature Coefficient Thermistor: CA-NTC24C018

Basic Size	Selection Level				Angle
	A	B	C	D	
≤5	±0.02	±0.03	±0.05		0°~30° ±0.1°
>5~20	±0.03	±0.05	±0.1		31°~60°
>20~50	±0.05	±0.1	±0.15		±0.3°
>50~100	±0.1	±0.15	±0.2		61°~90°
>100	±0.1%	±0.15%	±0.2%		±0.5°

No.	WI-UE4009DJA01	Describe	UE4009 Frameless Torque Motor	
Materials		Sheet	Number	Versions
Date	2026/4/3	A3	1	A
Design	Fenghua Wang	Page- / Pages-		
Check		MOSRAC		
Approve				

