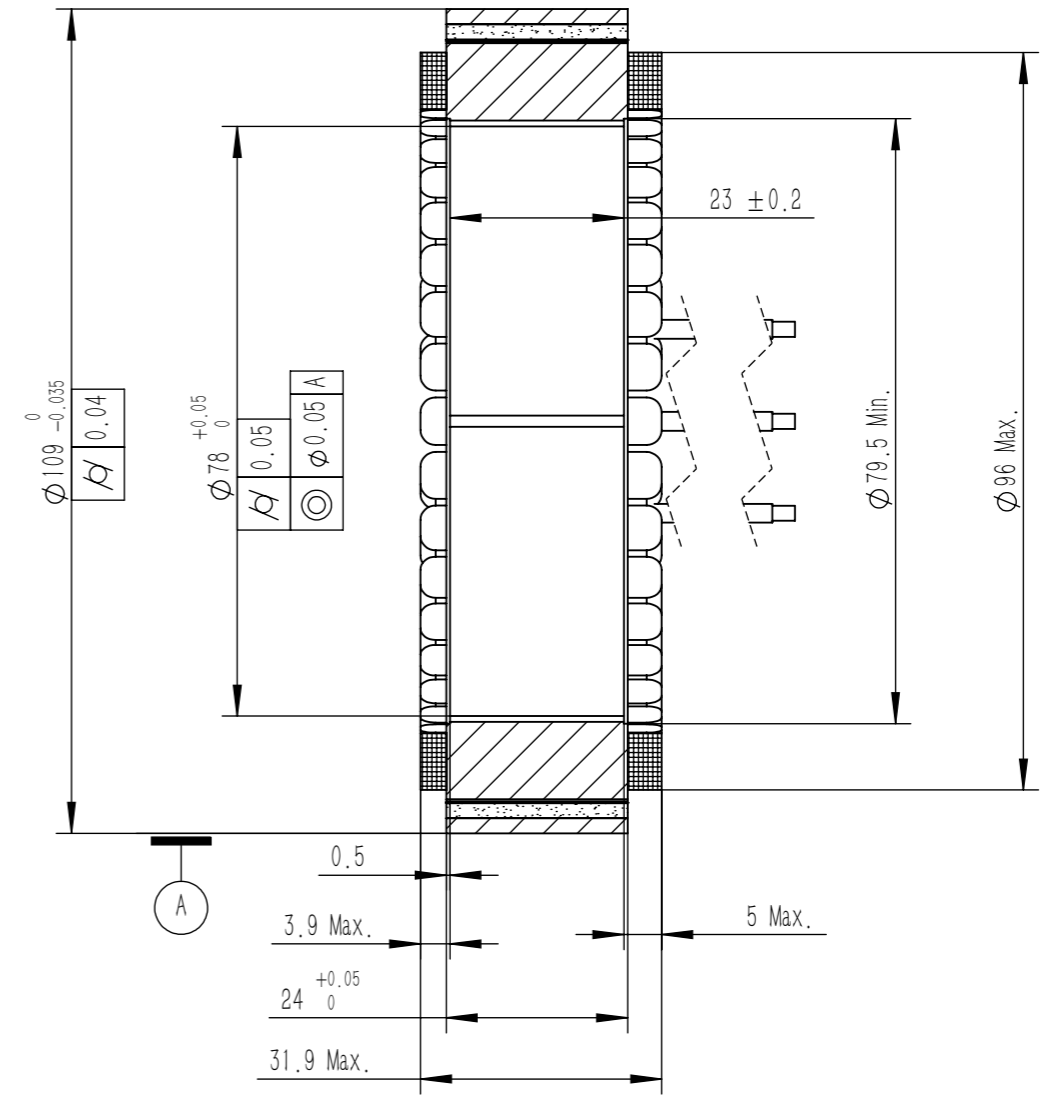
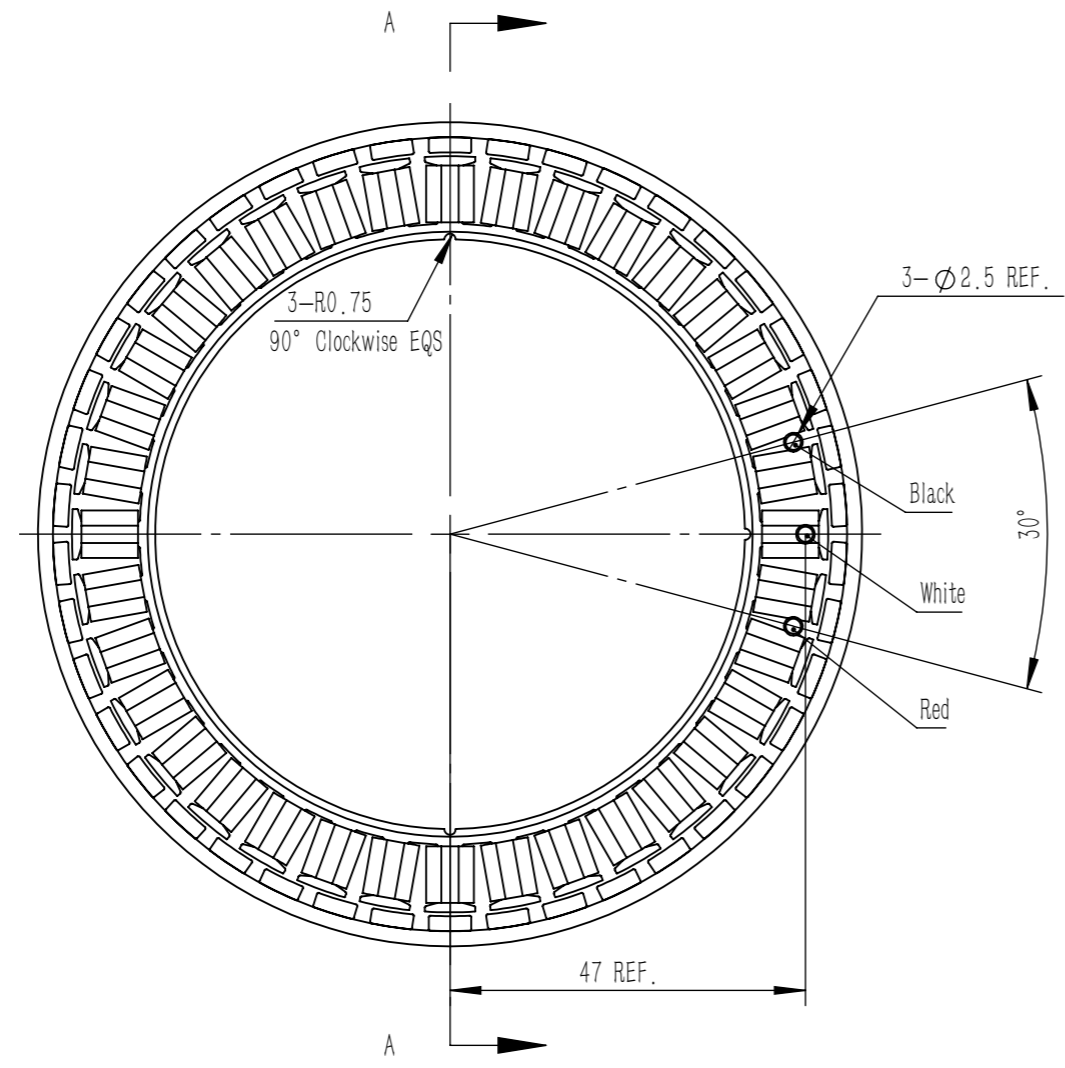
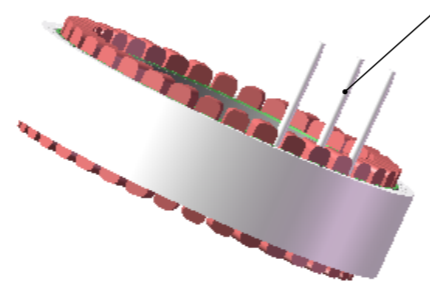


标记	处数	更改内容	版本	签名	时间



Wire: #14AWG black,white,red,corresponding to V, W, U  
Wire length 250mm



Motor Parameter

Model	UE10933
Voltage (V)	48V DC
Rated output (W)	1008.70
Rated torque (Nm)	3.85
Instant max torque (Nm)	4.2
Rated current (Arms)	19
Instant max current (Arms)	48
Rated speed (Rpm)	2500
Max speed (Rpm)	2650
Torque constant (Nm/Arms)	0.20
Rotor inertia (kg.cm <sup>2</sup> )	4.35
Back EMF coefficient (V/Krpm)	18
Resistance (Ω)	0.078
Inductance (mH)	0.048
Number of pole-pairs (P)	21

Basic Size	Selection Level				Angle
	A	B	C	D	
≤5	±0.02	±0.03	±0.05		0°~30° ±0.1°
>5~20	±0.03	±0.05	±0.1		31°~60° ±0.3°
>20~50	±0.05	±0.1	±0.15		61°~90° ±0.5°
>50~100	±0.1	±0.15	±0.2		
>100	±0.1%	±0.15%	±0.2%		

No.	WI-UE10933DJA01	Describe	UE10933 Frameless Torque Motor	
Materials		Sheet	Number	Versions
Date	2026/4/3	A3	1	A
Design	Fenghua Wang	Page- / Pages-		
Check		MOSRAC		
Approve				

