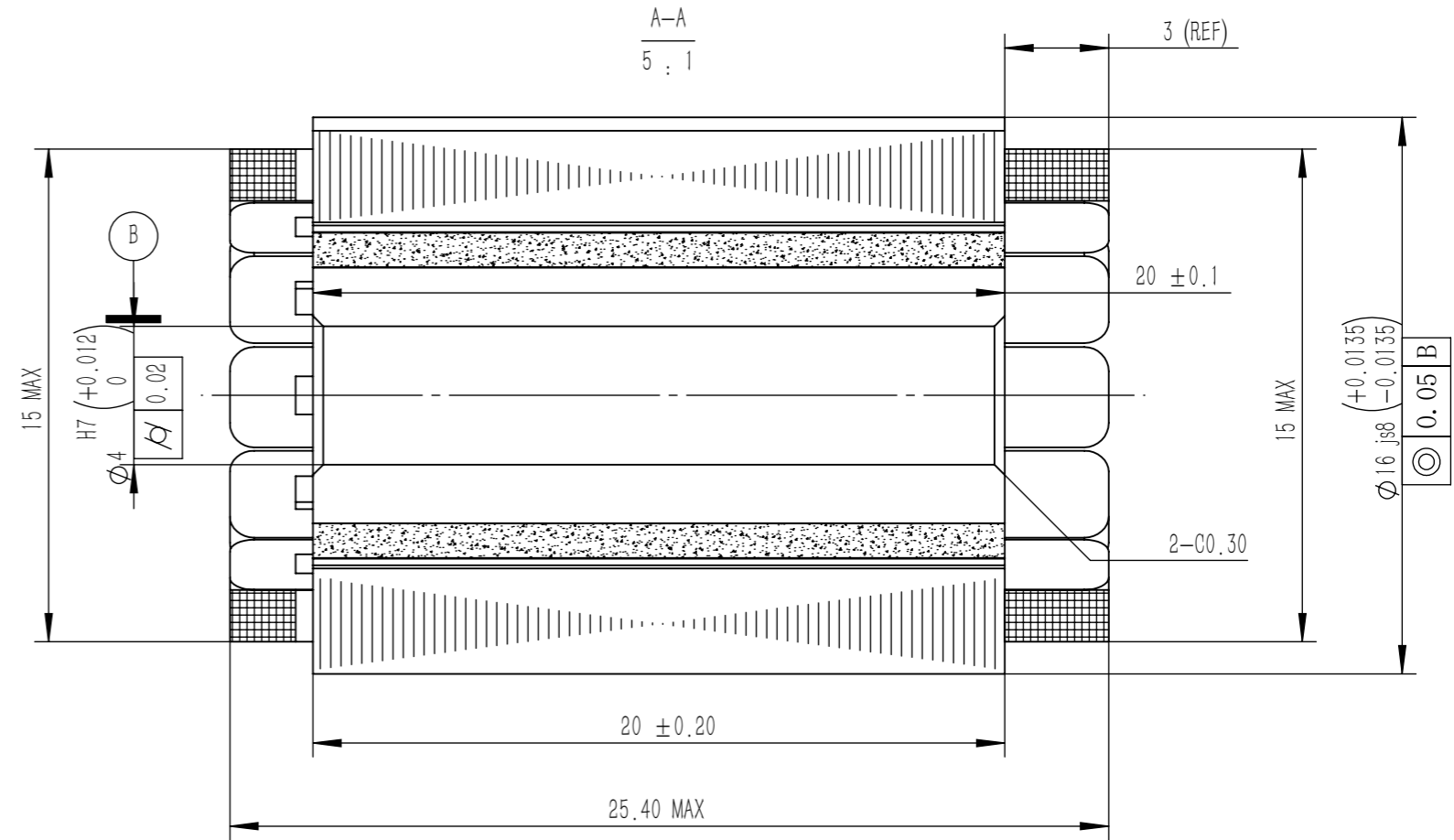
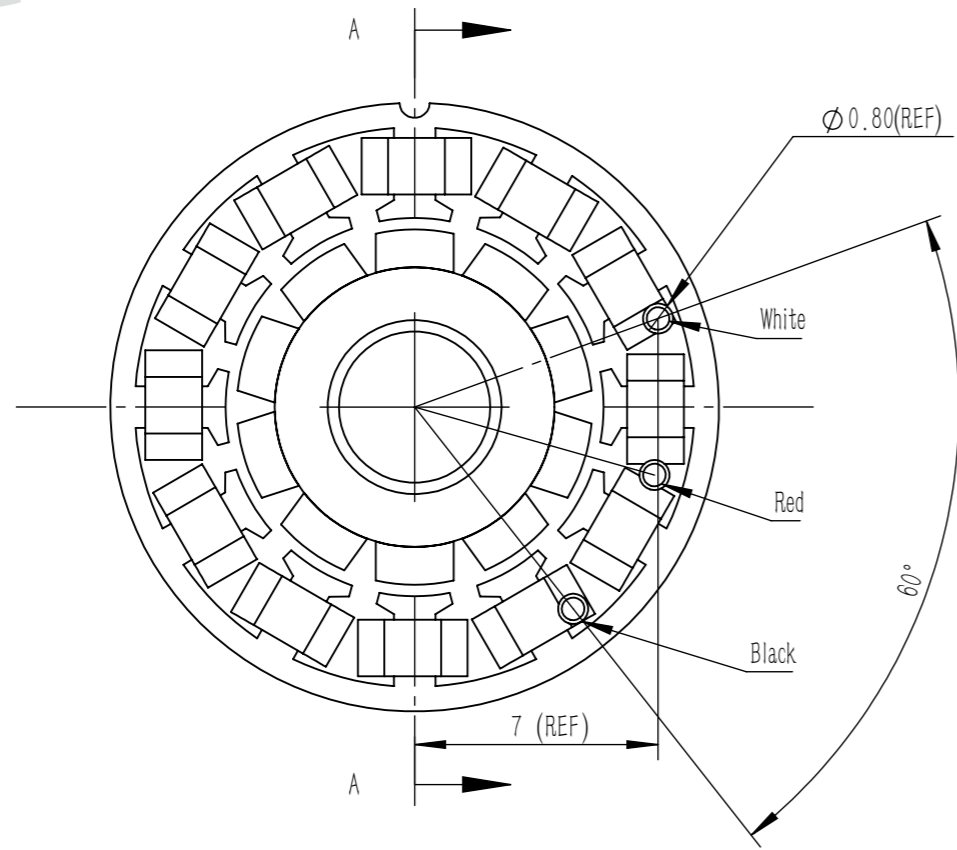
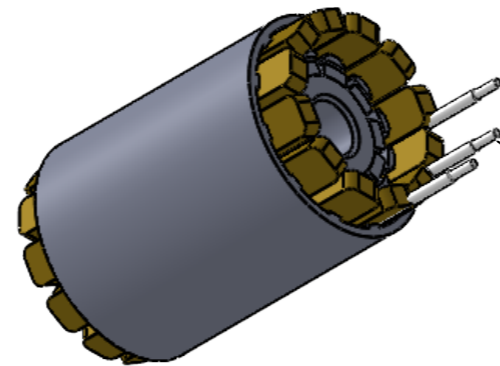


保密



|                                  |           |
|----------------------------------|-----------|
| Model                            | U1625     |
| DC voltage (VDC)                 | 12        |
| Rated output (W)                 | 3.14      |
| Rated torque (N.m)               | 0.02      |
| Rated current(A)                 | 0.8       |
| Rated speed (rpm)                | 1500      |
| Maximum speed (rpm)              | 3000      |
| Instant max torque (N.m)         | 0.04      |
| Instant max current (A)          | 1.6       |
| Coil resistance (ohms@20°C)      | 4.5       |
| Coil inductance (mH)             | 1.55      |
| Torque parameters (Nm/A)         | 0.03      |
| Back EMF coefficient (Vrms/KRPM) | 3.3       |
| Number of pole-pairs (2P)        | 5         |
| Rotor inertia (Kg.cm2)           | 0.0000005 |
| Winding connection way           | Y         |



Cable: #26AWG red,black,white, corresponding to U, V, W  
Wire length 250mm

|           |              |              |                  |           |                |          |  |                    |                             |                              |
|-----------|--------------|--------------|------------------|-----------|----------------|----------|--|--------------------|-----------------------------|------------------------------|
|           |              |              |                  |           |                |          |  | <b>MOSRAC 强和电机</b> |                             |                              |
|           |              |              |                  |           |                |          |  | Drawing Sign       | Version                     | U1625 Frameless Torque Motor |
| Marker    | Place number | Drawing Zone | Rev. No.         | Signature | Month-Day-Year |          |  | Weight             | WI-YF-U1625DJA01            |                              |
| Designer  | TJT          | 2026/1/6     | Unification      |           |                |          |  | Scale              | MOSRAC Motor R&D Department |                              |
| Checker   |              |              | Process Engineer |           |                |          |  |                    |                             |                              |
| Technical | CMH          | 2026/1/6     | Approval         |           |                | Sheet of |  | Perspective        |                             |                              |