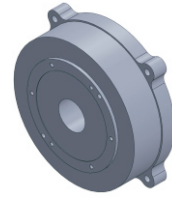


FI-28095 DD Motor



MAIN PARAMETERS	VALUE
Voltage(VAC)	220
Rated torque (Nm)	45
Instant Max Torque (Nm)	146.3
Torque constant (Nm/Arms)	11.3
Rated Current (Arms)	4
Instant Max Current (Arms)	13
Resistance (Ω)	5.5
Inductance (mH)	24
Pole-pairs number (2P)	23
Back EMF coefficient (Vrms/rad/s)	7.1
Rated Output (W)	565.9
Rotor inertia 10 ⁻⁴ kg.m ²	312
Rated Speed (rpm)	120
Max Speed (rpm)	240
Positioning accuracy(arc_sec)	± 20
Repeat positioning accuracy (arc_sec)	± 1.5
Encoder resolution (sin/cos)	16384
Axial load (N)	12000
Radial load (N.m)	400
Axial runout (mm)	≤0.005
Radial runout (mm)	≤0.005
Weight (kg)	24.2

Specification & drawing

