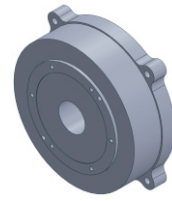


FI-280145

DD Motor



MAIN PARAMETERS	VALUE
Voltage(VAC)	220
Rated torque (Nm)	90
Instant Max Torque (Nm)	288
Torque constant (Nm/Arms)	18
Rated Current (Arms)	5
Instant Max Current (Arms)	16
Resistance (Ω)	3.3
Inductance (mH)	15.5
Pole-pairs number (2P)	23
Back EMF coefficient (Vrms/rad/s)	10
Rated Output (W)	1131.8
Rotor inertia 10 ⁻⁴ kg.m ²	512
Rated Speed (rpm)	120
Max Speed (rpm)	240
Positioning accuracy(arc_sec)	± 20
Repeat positioning accuracy (arc_sec)	± 1.5
Encoder resolution (sin/cos)	16384
Axial load (N)	12000
Radial load (N.m)	400
Axial runout (mm)	≤0.005
Radial runout (mm)	≤0.005
Weight (kg)	46

Specification & drawing

