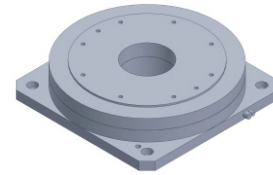


FI-17050

DD Motor



MAIN PARAMETERS	VALUE
Voltage(VAC)	220
Rated torque (Nm)	5.4
Instant Max Torque (Nm)	16
Torque constant (Nm/Arms)	1.8
Rated Current (Arms)	3
Instant Max Current (Arms)	9
Resistance (Ω)	6.9
Inductance (mH)	8.3
Pole-pairs number (2P)	20
Back EMF coefficient (Vrms/rad/s)	1.5
Rated Output (W)	141.5
Rotor inertia 10^{-4} kg.m ²	40
Rated Speed (rpm)	250
Max Speed (rpm)	500
Positioning accuracy(arc_sec)	± 20
Repeat positioning accuracy (arc_sec)	± 1.5
Encoder resolution (sin/cos)	11740
Axial load (N)	2500
Radial load (N.m)	20
Axial runout (mm)	≤ 0.005
Radial runout (mm)	≤ 0.005
Weight (kg)	3.9

Specification & drawing

