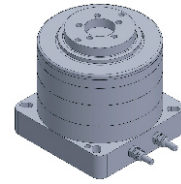


FI-60 series DD Motor



MAIN PARAMETERS	FI-6060	FI-6080
Voltage(VAC)	220	220
Rated torque (Nm)	0.5	1
Instant Max Torque (Nm)	1.6	4.4
Torque constant (Nm/Arms)	0.2	0.4
Rated Current (Arms)	2.5	2.5
Instant Max Current (Arms)	8	11
Resistance (Ω)	4	3.5
Inductance (mH)	3.6	3
Pole-pairs number (2P)	10	10
Back EMF coefficient (Vrims/rad/s)	0.2	0.3
Rated Output (W)	15.7	31.4
Rotor inertia 10^{-4} kg.m ²	0.55	0.8
Rated Speed (rpm)	300	300
Max Speed (rpm)	600	600
Positioning accuracy(arc_sec)	± 40	± 40
Repeat positioning accuracy (arc_sec)	± 4	± 4
Encoder resolution (sin/cos)	4096	4096
Axial load (N)	700	700
Radial load (N.m)	10	10
Axial runout (mm)	≤ 0.01	≤ 0.01
Radial runout (mm)	≤ 0.01	≤ 0.01
Weight (kg)	0.8	1
Motor height L(mm)	60	80

Specification & drawing

